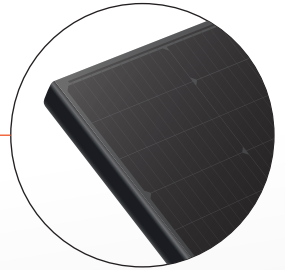
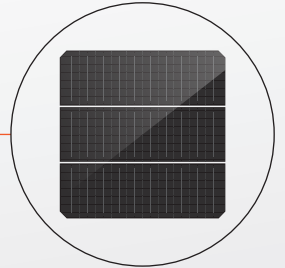


Innovative Design of Microinverter



Full-Screen PV Module



1/3 Cut Solar Cells

SolarUnit

The World's
First Integrated
PV System

DAH-SU800D



Integrated System Design

- Modular design of solar system, convenient installation, lower BOS cost
- Each unit operates independently, unrestricted installation angle, more capacity on complex roofs



High System Generation

- Integrated system solution, perfect match between module and microinverter, higher system efficiency
- Module-level MPPT, greatly improves power generation of PV system



Innovative Module Technology

- Low current module with 1/3 cut solar cells, less heat loss, better low light performance, system generation increased by around 3%
- Global patented Full-Screen PV Module, decreases 6-15% power loss caused by dust accumulation



Leading Microinverter Technology

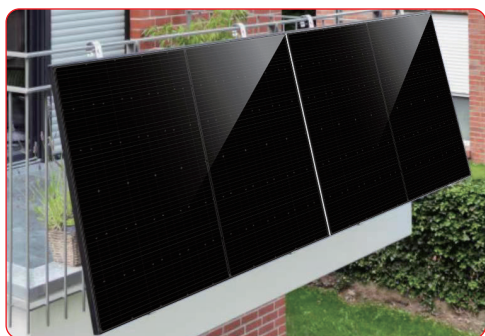
- Innovative contravariant scheme due to perfect match with low current module, peak efficiency above 97.16%
- The latest semiconductor technology, higher conversion efficiency, smaller inverter size, less consumption



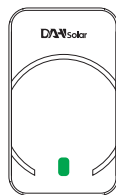
Improved Safety Assurance

- Lower risk of arcing due to lower system current, greatly reduces safety hazards
- Remote monitoring and rapid shutdown through smart cloud platform

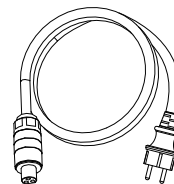
System Configuration



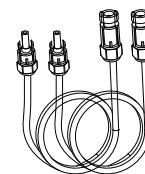
System



ECU



AC Bus



DC cable
(optional)

Accessories

Configuration list

SYSTEM LAYOUT	DAH-SU800D	
Recommended PV Module Power (STC) Range	6 Units	6 Units
Maximum Power (Pmax/W)	420W (PERC)	440W (N-TOPCon)
AC Bus Cable Current-Carrying	28A/1pcs	28A/1pcs
AC Bus Connection Type	Fast-Plug Connector	Fast-Plug Connector
UNIT DATA		
Max. Output Power	800VA	800VA
Grid Voltage	220V/230V (180V-270V), L+N+PE	220V/230V (180V-270V), L+N+PE
Output Frequency Range	50/60Hz±5Hz	50/60Hz±5Hz
Max Output Current	4.0A	4.0A
Power Factor (Default/Adjustable)	0.9 Leading...0.9 Lagging	0.9 Leading...0.9 Lagging
Output Current Total Harmonic Distortion	< 2%	< 2%
Peak Efficiency	97.16%	97.16%
CEC Weighted Efficiency	97.02%	97.02%
MPPT Efficiency	> 99.95%	> 99.95%
Night Power Consumption	0W	0W
FEATURES		
Operating Ambient Temperature Range	-40°C ~ +65°C	-40°C ~ +65°C
Storage Temperature Range	-40°C ~ +85°C	-40°C ~ +85°C
Protection	IP65	IP65
Cooling	Natural Convection-No Fans	Natural Convection-No Fans
Microinverter Size (H x W x D)	412mm×97mm×42.5mm	412mm×97mm×42.5mm
Microinverter Weight	1.8kg	1.8kg
System Size (H x W x D)	1766×1132×32mm (X2)	1766×1132×32mm (X2)
System Weight	46.8kg	46.8kg
Noise	< 10db	< 10db
Overvoltage Class	III	III
Communication	Wifi/PLC	Wifi/PLC
Operational Platform	DAH Smart Cloud Platform	DAH Smart Cloud Platform
System Integration	Integration of System and Module	Integration of System and Module
Certificates	ABNT NBR 16150,VDE-AR-N 4105: 2018	ABNT NBR 16150,VDE-AR-N 4105: 2018
	IEC/EN 62109-1/-2	IEC/EN 62109-1/-2
	IEC/EN 61000-6-1/-2/-3/-4	IEC/EN 61000-6-1/-2/-3/-4
	IEC/EN 61000-3-2/-3	IEC/EN 61000-3-2/-3
	IEC61215 IEC61730	IEC61215 IEC61730